

# INTERNATIONAL CORPORATE CENTER

13,733 Sq. Ft.  
Flex/Industrial  
Space For Lease



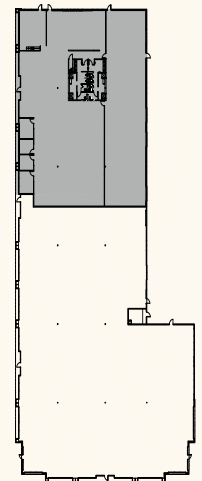
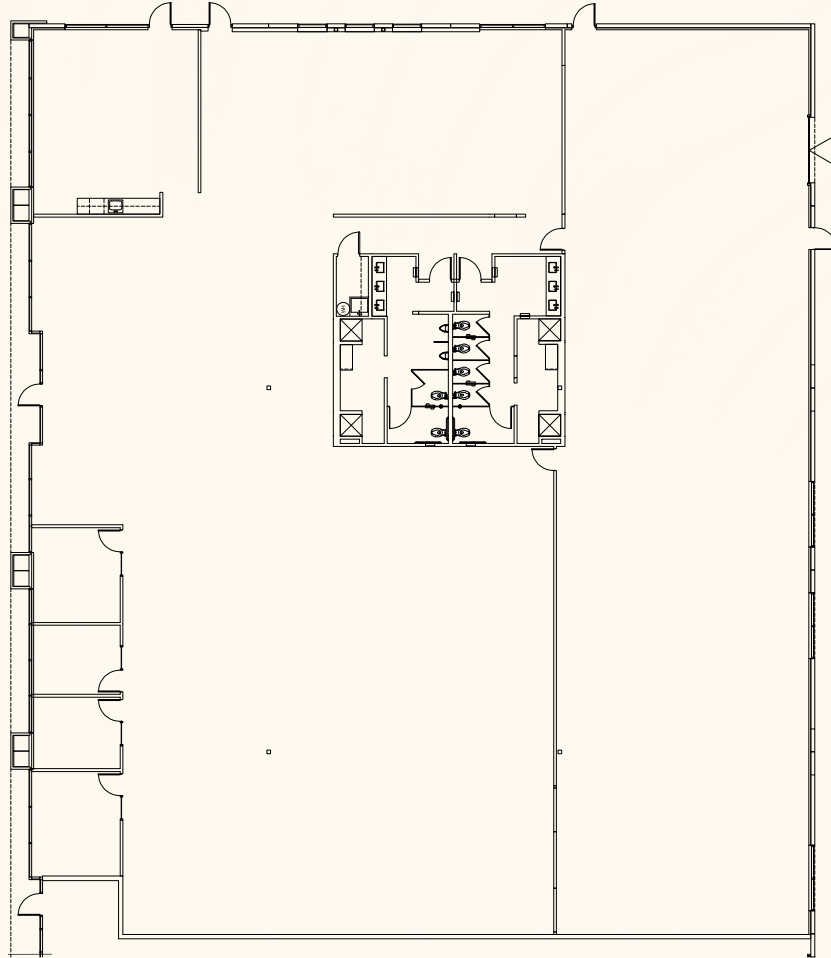
11815 NE Glenn Widing, Portland, OR 97220

**PACTRUST**

### Space Plan | 14' Clear Height

**PacTRUST**

- ▲ Dock Access
- △ Grade Access



**Building Plan**

# Key Features



13,733 sq. ft shell



9,614 sq. ft. office



1 grade door

LED lighting throughout

Upgraded, modern finishes

Each restroom equipped with showers

Ability for 53' trailers

Excellent access to I-205, I-84 and Portland International Airport

**Lease Rate:**  
**\$20.00 /sq. ft./yr.**

**NNN Lease**



# Leasing Contacts

Jake Bigby

jakeb@pactrust.com

Caitlin Knecht

caitlink@pactrust.com

503.624.6300

www.pactrust.com

Owned & Managed by

**PacTrust**

International Corporate Center  
Flex/Industrial Space For Lease

11815 NE Glenn Widing Drive  
Portland, OR 97220

